

Cummings Center

Route 62, Units 144A-F & 150B, Beverly MA 01915

FOR LEASE

Warehouse / Storage / Bio-Tech Lab Space

18,893 +/- SF with Loading Dock Access



PROPERTY FEATURES

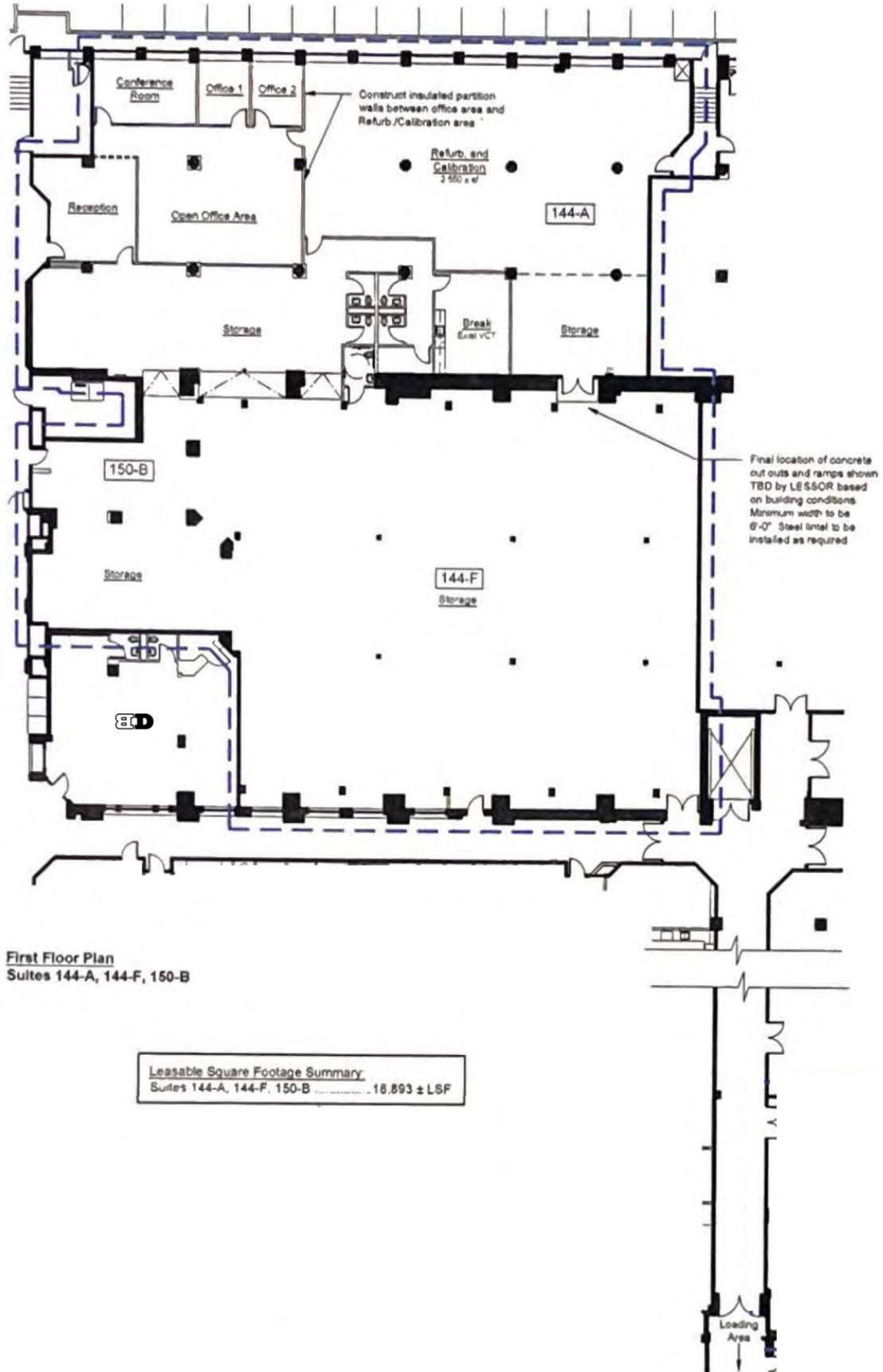
Location	Downtown / Highway Access
Zoning	Industrial
Space Available	18,893 +/- SF
Space Condition	Shell
Clear Height	12-14'
Clear Span	11' X 20'
Sprinklers	Wet
Docks / Doors	Shared access to two (2) Tailboard Loading Docks
Lease Type	Modified Gross
Allowed Uses	Bio-Tech Lab Space, Storage, Warehouse, Distribution, Manufacturing / Assembly



The Mega Group
Commercial Real Estate

The Mega Group - Commercial Real Estate
7 Federal Street, Suite 15 • Danvers, MA 01923
Phone (978)762-9771 • Fax (978)762-9772

www.TheMegaGroup.net

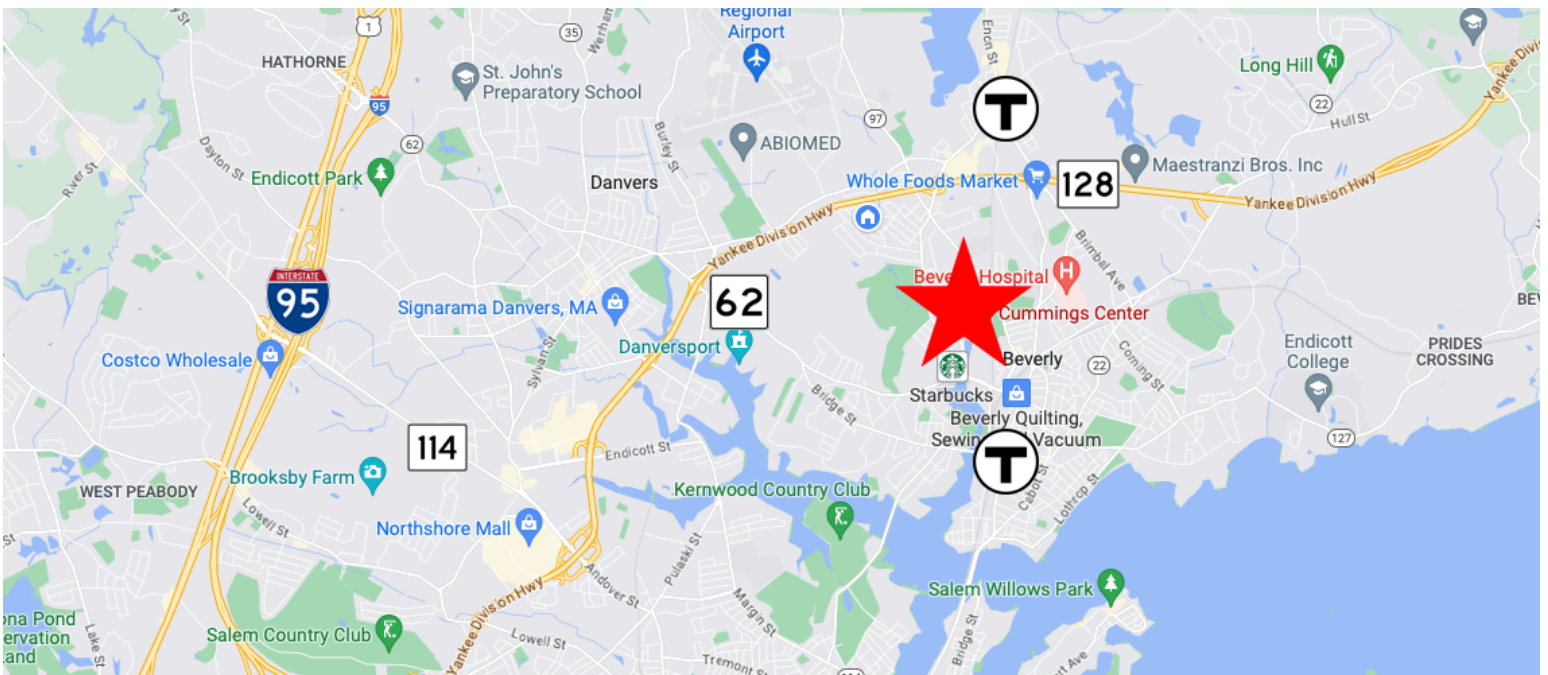
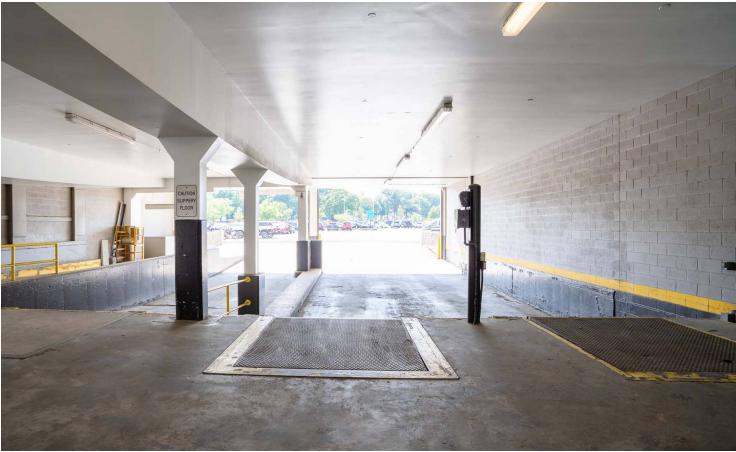




JASON K CLARK, Senior Associate
 Cellular (978) 869-5728
Jason@TheMegaGroup.net



BRIAN DAPICE, Principal
 Cellular (978) 609-1339
Brian@TheMegaGroup.net



DISCLOSURE Subject to errors, omissions, prior sale or withdrawal from the market. Broker cannot guarantee utilities to be completely separate and makes no warranty or representation, expressed or implied, as to the accuracy of the information contained herein. Brian DApice & Associates LLC (d/b/a The Mega Group) is a Massachusetts Limited Liability Corporation. MA License #422172.