

Site Plan in MIDDLETON, MASS.

Hayes Engineering, Inc.
Civil Engineers & Land Surveyors
603 Salem Street
Wakefield, MA 01880

Telephone: 781.246.2800
Facsimile: 781.246.7596
www.hayeseng.com

Scale: 1" = 20'



July 23, 2008
Revised: August 6, 2008
Revised: August 28, 2008
Revised: October 20, 2022

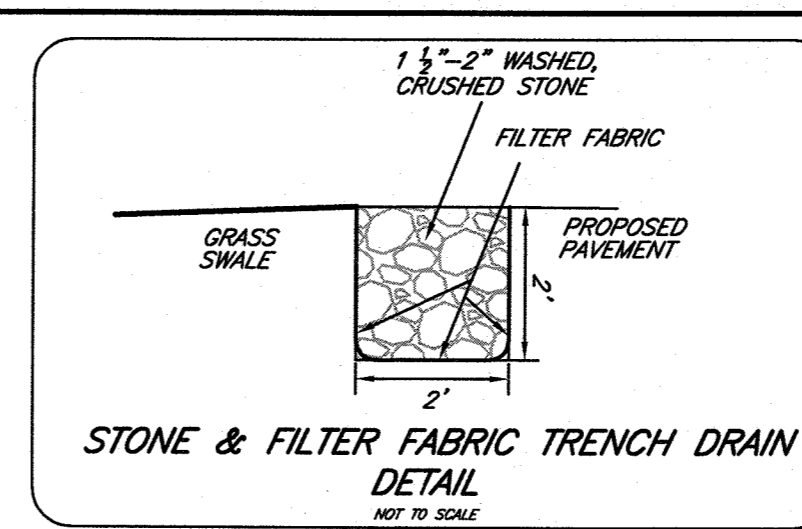
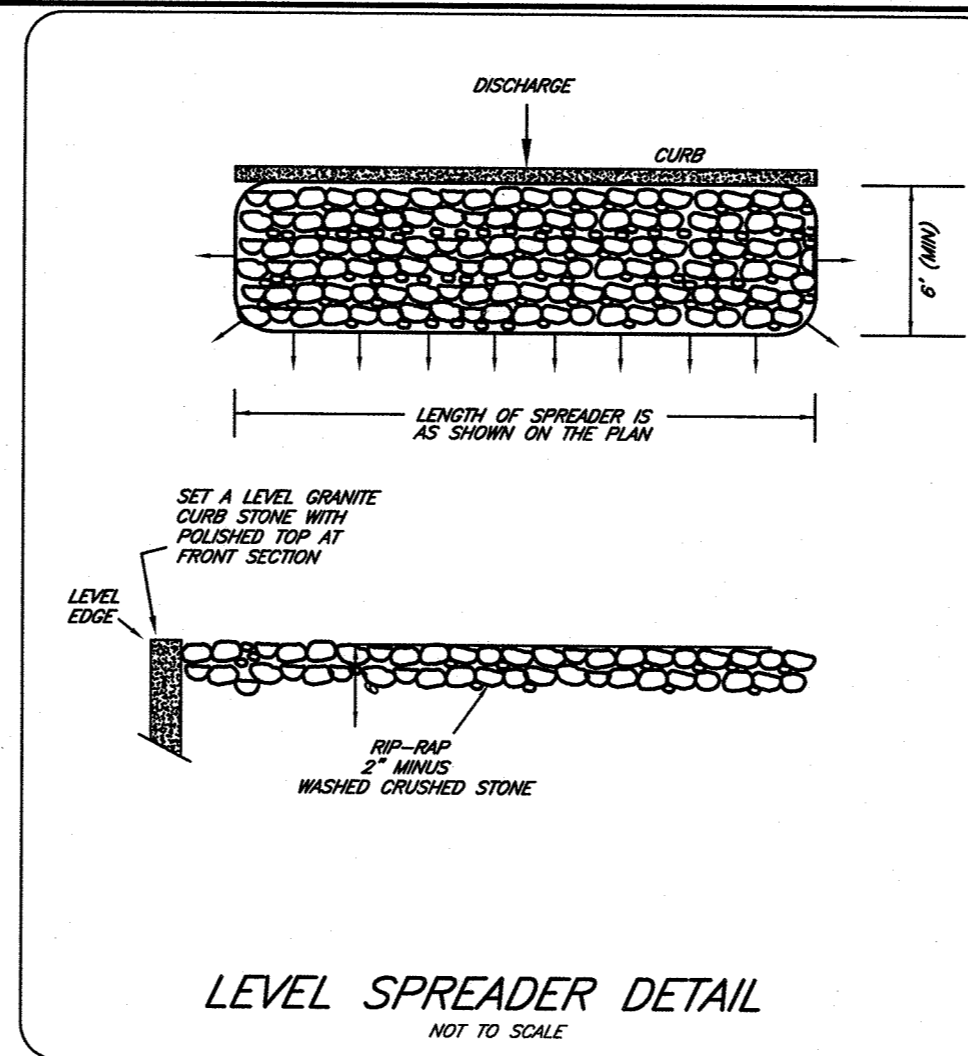
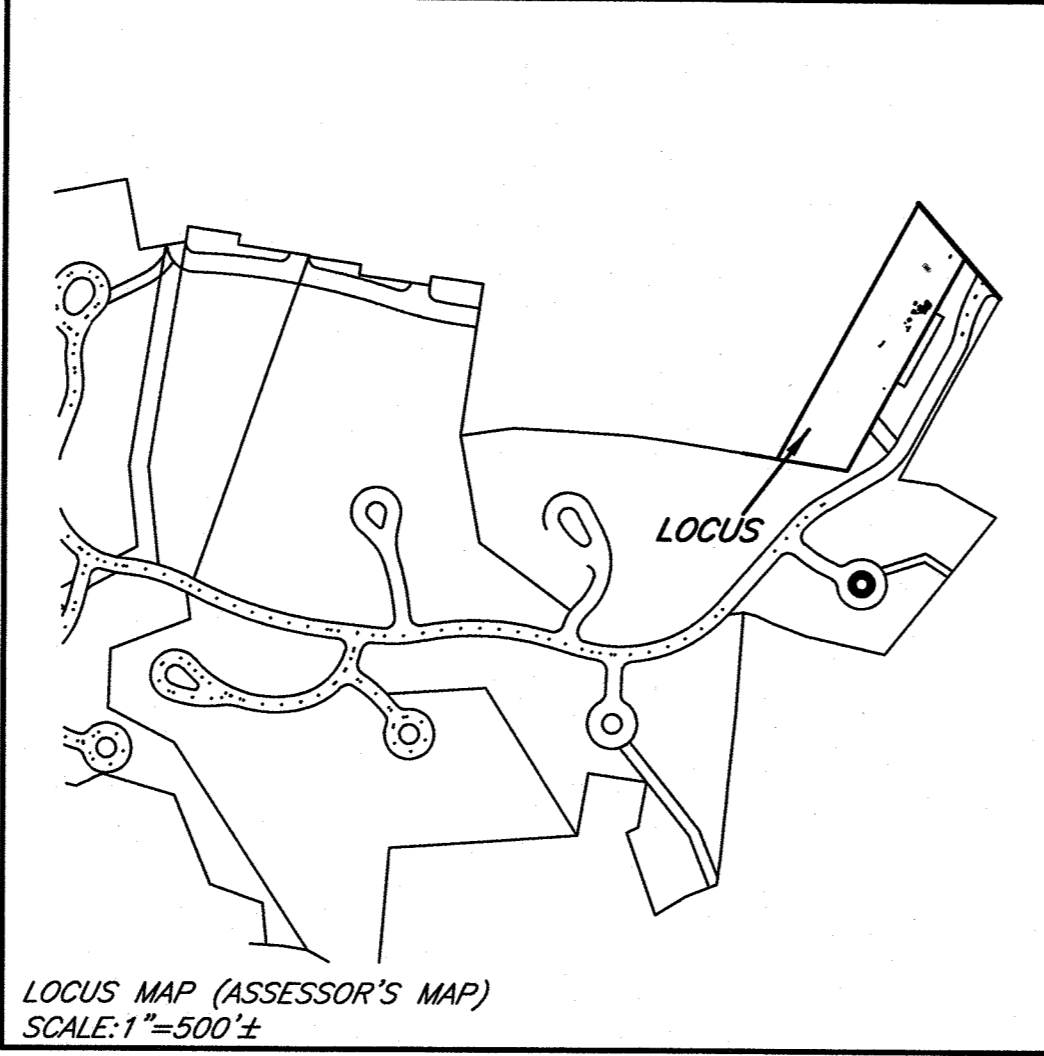
#161 South Main Street

EXISTING 2 1/2 STORY BANK & BUSINESS BUILDING
13,751 S.F.
1 SPACE/200 S.F.
*REQUIRED SPACES=69 SPACES

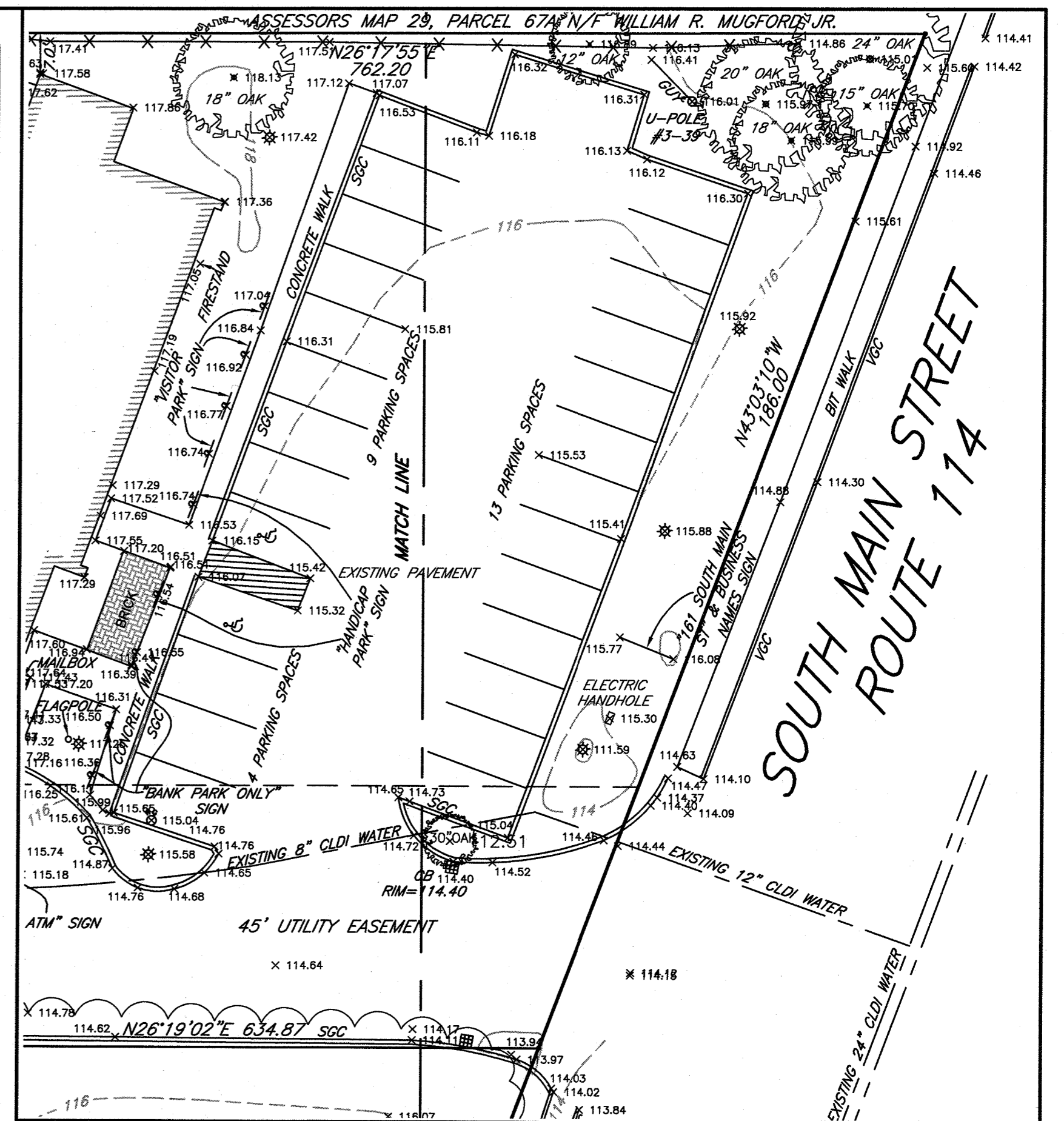
EXISTING 2 STORY BUILDING
3,000 S.F. (OFFICE UPSTAIRS)
1 SPACE/200 S.F.
*REQUIRED SPACES=15 SPACES

EXISTING 1 STORY BUILDING
4,000 S.F. (DISTRIBUTION WAREHOUSE) WITH NO EMPLOYEES
PROPOSED ADDITION 2,688 S.F. (TO DISTRIBUTION WAREHOUSE) WITH NO EMPLOYEES, NO COMPANY VEHICLES

*TOTAL REQUIRED SPACES=8 SPACES

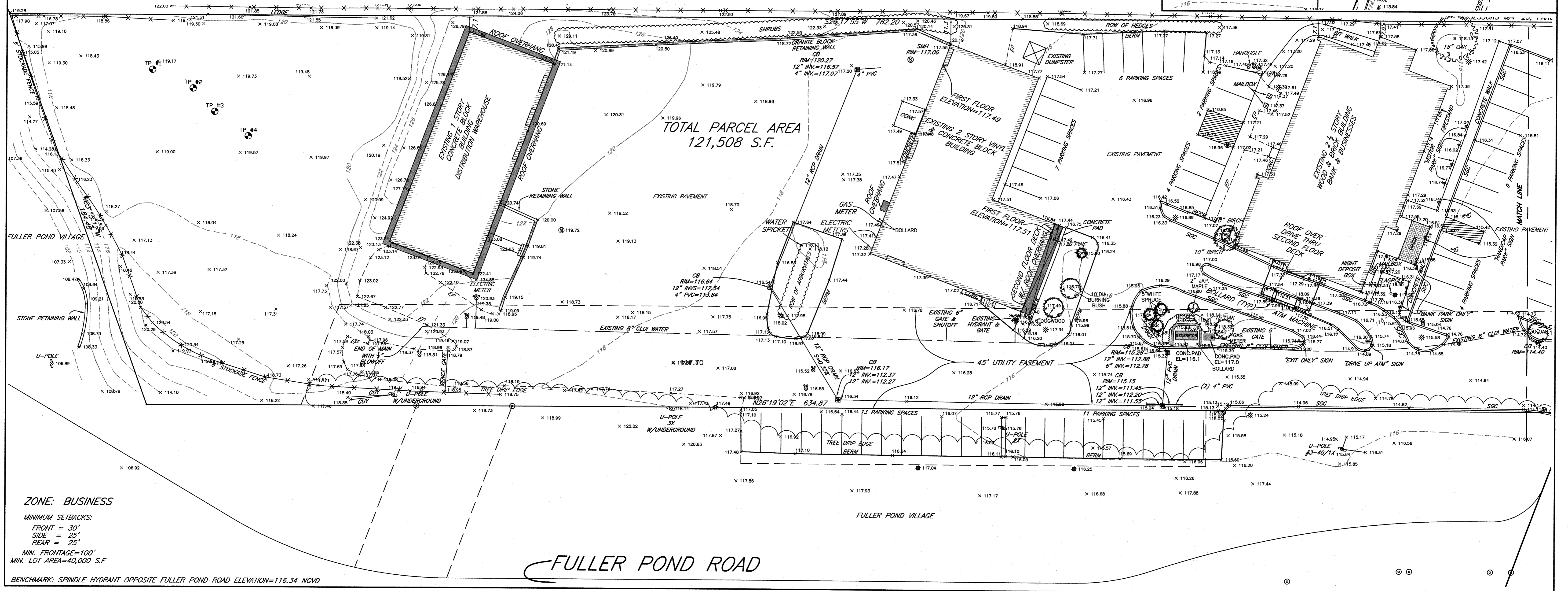
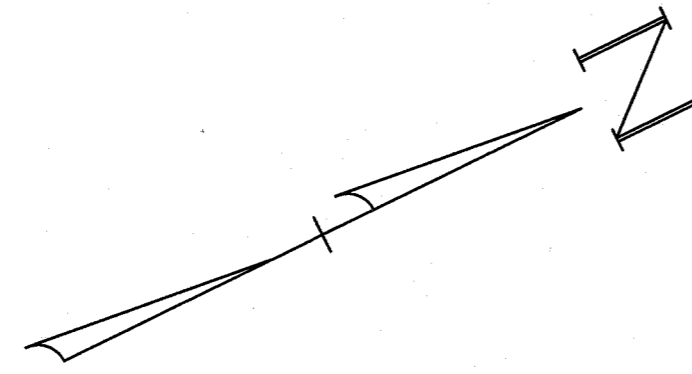


NOTES:
THIS SITE PLAN COMBINES TWO LOTS TO CREATE A CALCULATED TOTAL PARCEL AREA OF 121,508 S.F.



BUILDING COVERAGE
EXISTING BUILDINGS AREA = 15,683 S.F.
TOTAL BUILDING AREA = 15,689 S.F.
BUILDING COVERAGE = 12.9%

OPEN SPACE AREA
25.4%



ZONE: BUSINESS
MINIMUM SETBACKS:
FRONT = 30'
SIDE = 25'
REAR = 25'
MIN. FRONTAGE=100'
MIN. LOT AREA=40,000 S.F.
BENCHMARK: SPINDLE HYDRANT OPPOSITE FULLER POND ROAD ELEVATION=116.34 NGVD

FULLER POND ROAD